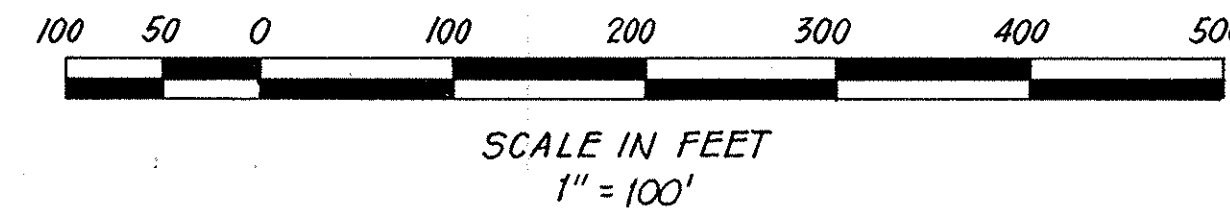
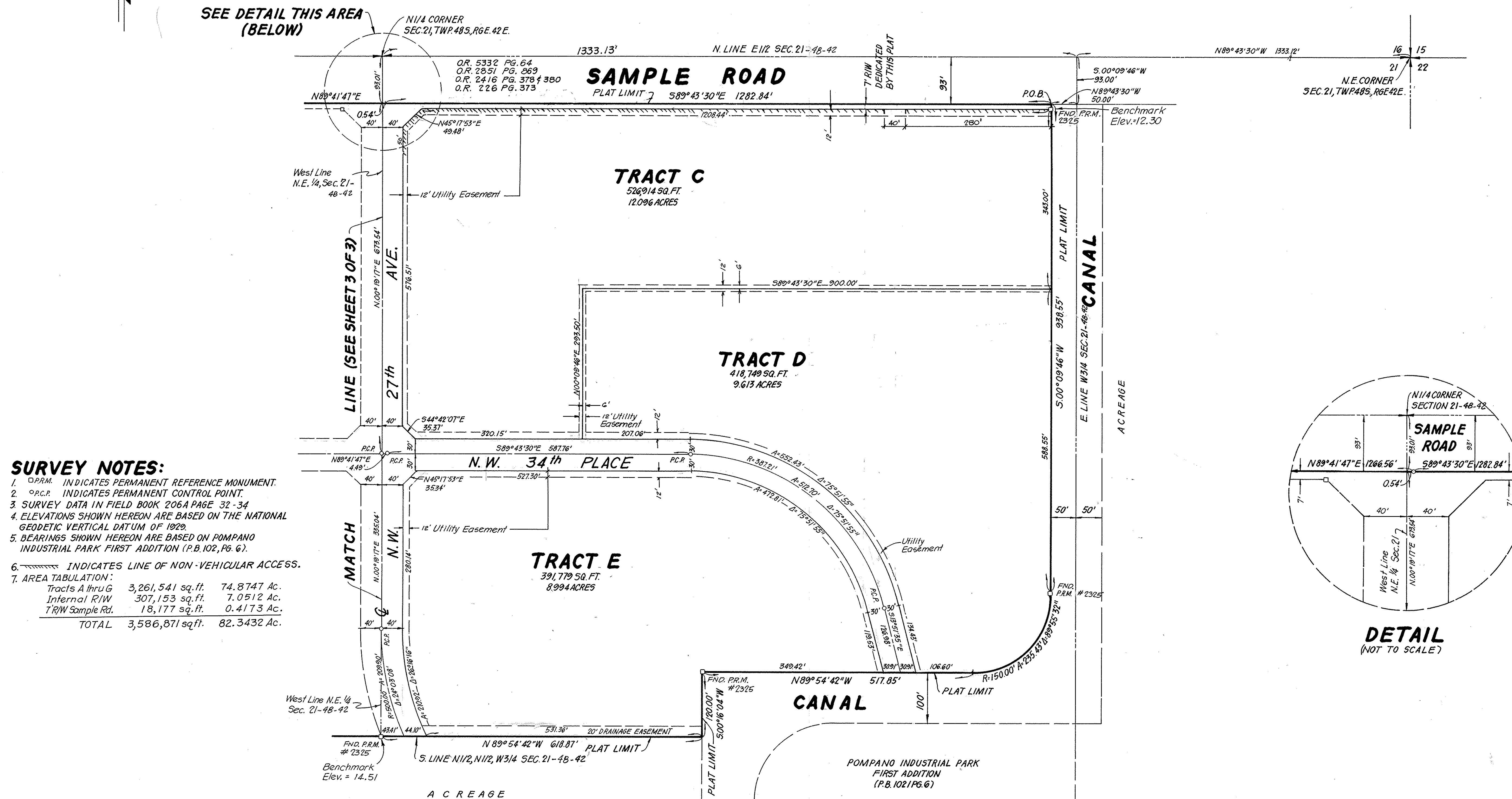


# POMPANO INDUSTRIAL PARK THIRD ADDITION

**A PARCEL OF LAND IN SECTION 21, TOWNSHIP 48 SOUTH, RANGE 42 EAST  
BROWARD COUNTY, FLORIDA**



**PREPARED BY:**  
**KEITH AND SCHNARS, P.A.**  
ENGINEERS · PLANNERS · SURVEYORS  
1115 N.E. 4TH AVENUE  
FORT LAUDERDALE, FLORIDA



**DETAIL**  
(NOT TO SCALE)

# DRC

PZ22-12000027  
10/5/2022

# DRC

PZ22-12000027  
8/17/2022

**6999C**